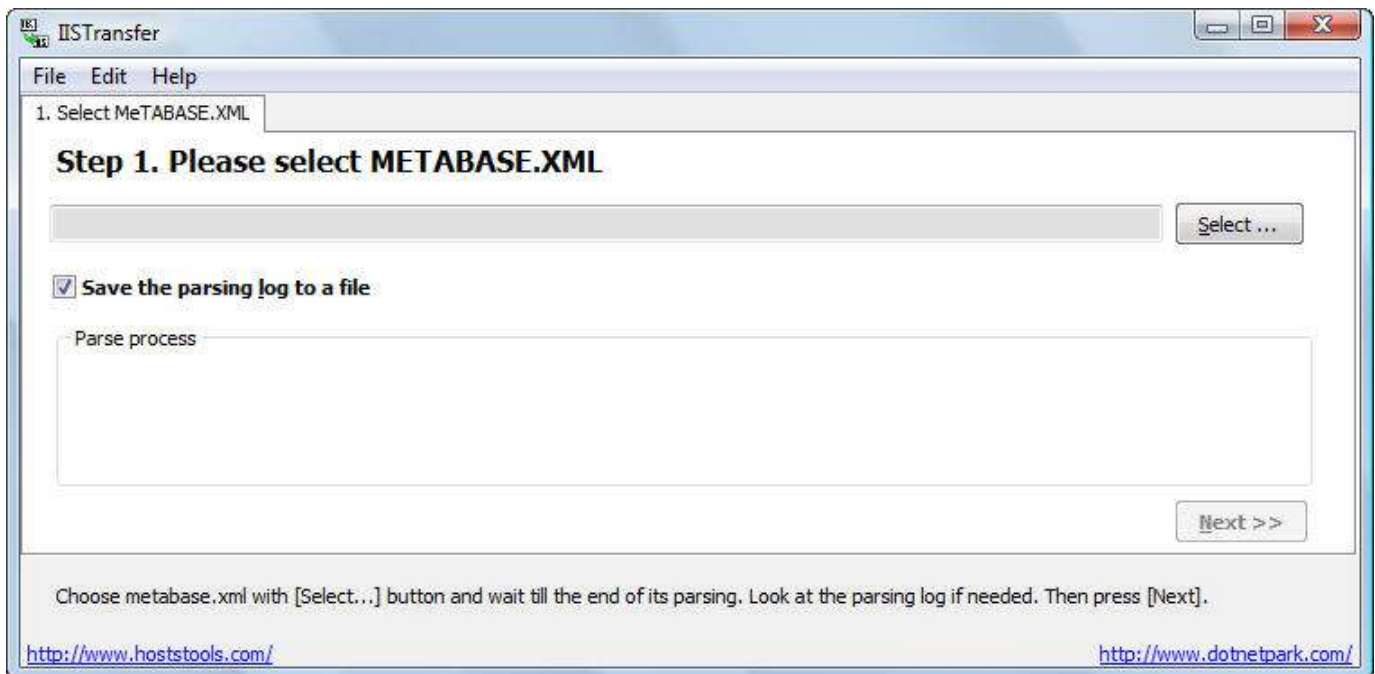


IIS Sites Transfer 2.0 Quick Start Guide

Step 1

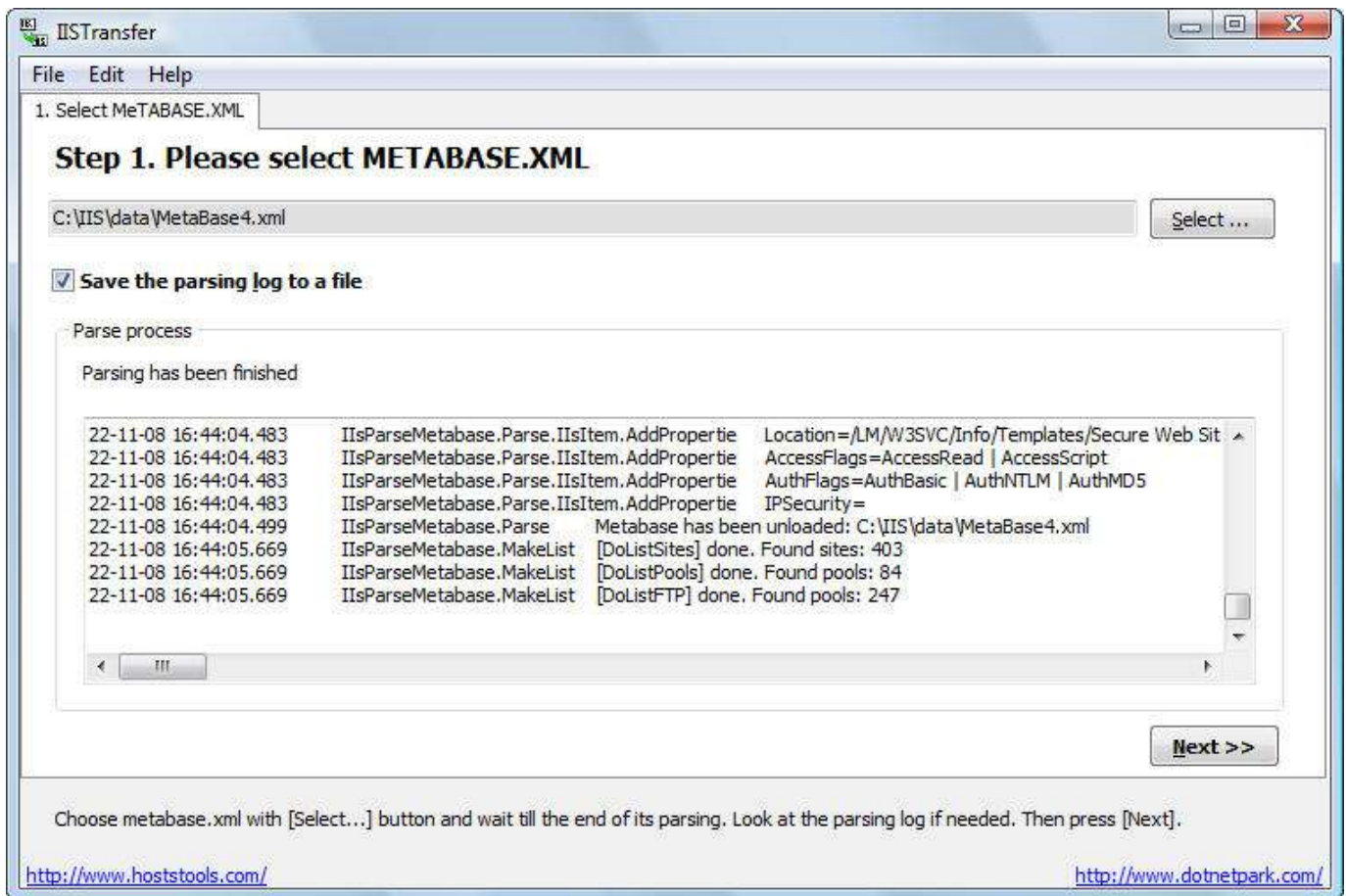
Choose metabase.xml with [Select...] button.



If "Save the parsing log to a file" is checked, the parsing log is saved in iis.parseDMY.log file in \logs\ folder (DMY is the current date). It is recommended to leave it checked.

Right after the metabase.xml selection the IIS Sites Transfer starts to parse the metabase file. You should wait till the end of its parsing

Look at the parsing log. You can see the amount of websites, application pools and FTP accounts at its end.



Press [Next].

Step 2

Now you should set the transfer parameters.

First, select the things you wish to be created on the server. Such as websites, IIS application pools, FTP users.

Then select NTFS permissions to be set up. Selected accounts will have WRITE permission on website directory.

Now specify the replacement parameters. At least you have to specify a new IP address, because you are moving websites to other server and the new server has a different IP address. You can also change the websites Default content page (Default Document) and websites Local Path.

Note: These parameters will be applied for all websites you transfer during this session.

Separate Default Documents with commas, e.g.

index.php,index.asp,Default.aspx,home.html

Specify a new sites Local Path if needed. E.e. if the sites were placed in C:\WebSites\ on the old server, but you want them to be in D:\Sites\ on the new one, specify

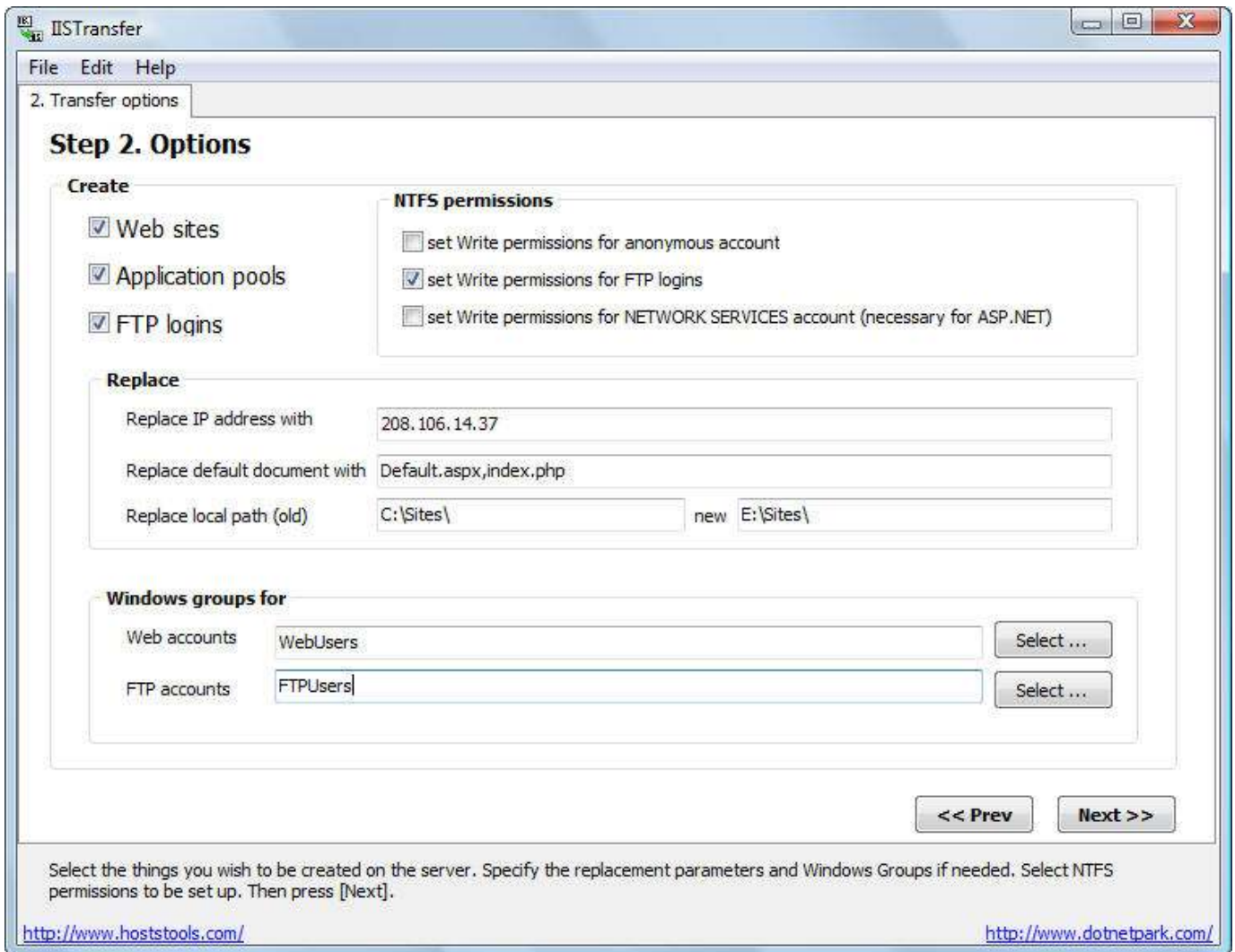
C:\WebSites\

in “*Replace local path (old)*” field and

D:\Sites\

in “*new*” field.

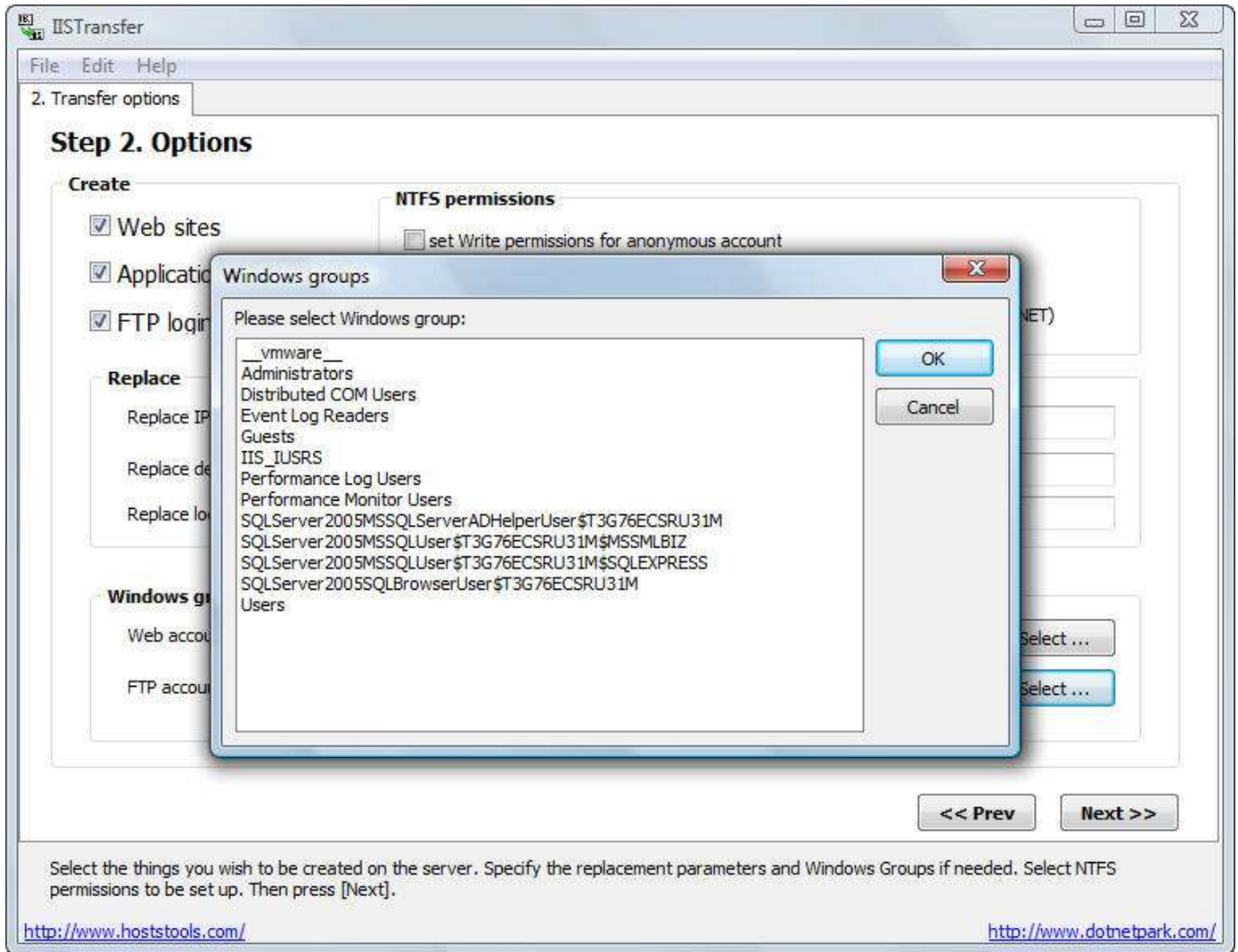
Double check if the paths are correct.



Now it is the time to specify Windows Groups for anonymous users and FTP accounts.

Good practice: It is not a must, but recommended, because it is much easier to administer the accounts later. For example you can place all anonymous users to WebAccounts group and later give this group the right to run PHP etc.

You can either use [Select...] button to select a group or type the group name in the field. If the group does not exist IIS Sites Transfer creates it.



Press [Next].

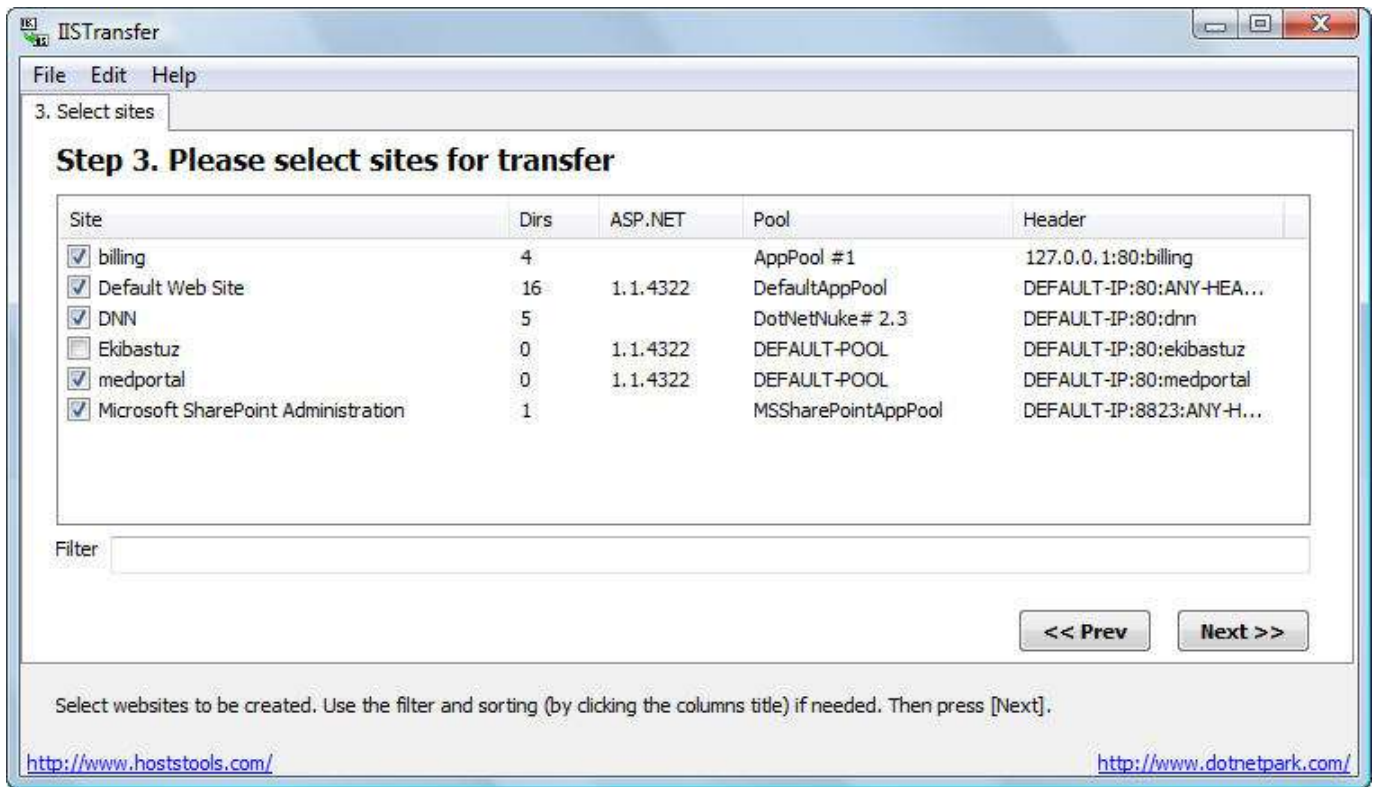
Step 3

Select websites to be created.

Sort the items by clicking the columns title if needed.

Use “*Edit*” menu or right-click menu to Select All or Deselect All.

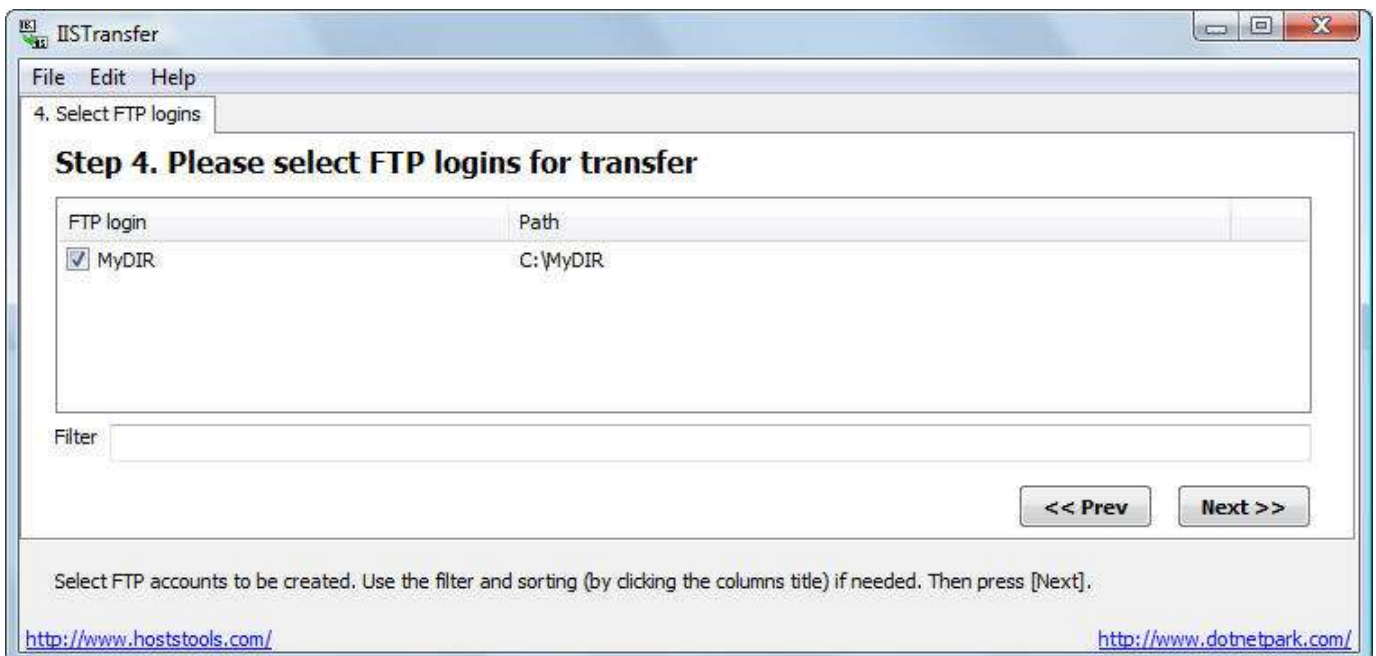
You can type some word in “Filter” field and you’ll get the list of items containing this word.



Press [Next].

Step 4

Select FTP accounts to be created. ...



Sort the items by clicking the columns title if needed.

Use “Edit” menu or right-click menu to Select All or Deselect All.

You can type some word in “Filter” field and you’ll get the list of items containing this word.

Press [Next].

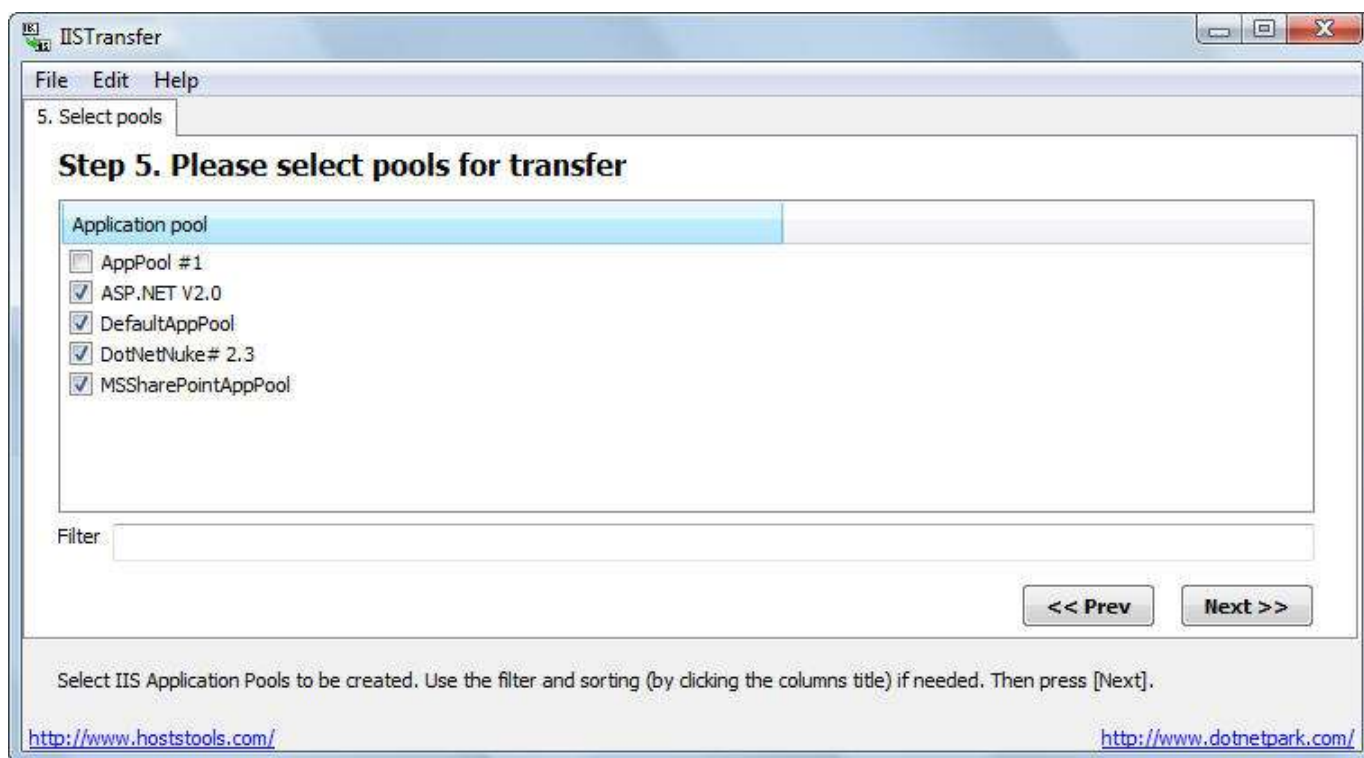
Step 5

Select IIS Application Pools to be created.

Sort the items by clicking the columns title if needed.

Use “*Edit*” menu or right-click menu to Select All or Deselect All.

You can type some word in “Filter” field and you’ll get the list of items containing this word.

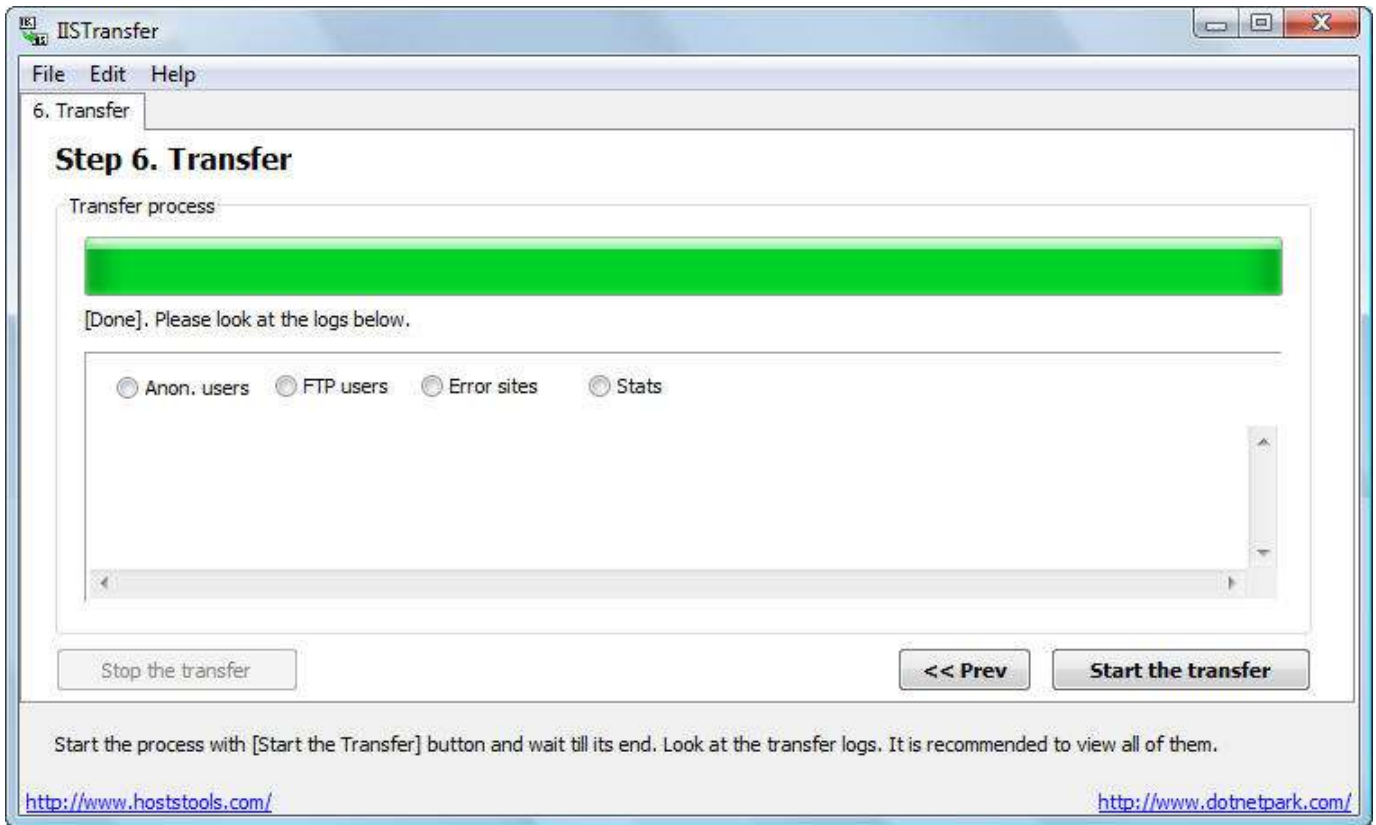


Press [Next].

Step 6

Start the process with [Start the Transfer] button and wait till its end.

When the process is finished, look at the transfer logs. It is recommended to view all of them.



- **Anon. users** – the list of created anonymous user accounts and their passwords. **Note:** IIS Sites Transfer assigns passwords only for new user accounts. It does not change passwords for existing accounts (Windows users)! You should sync the password for existing user manually in such cases. Usually this happens with default IUSR_... user.
- **FTP users** – the list of created FTP accounts and their passwords.
- **Error sites** – the list of websites created with errors.
- **Stats** – overall statistics.

You can find the logs in \logs\ folder:

- iis.parseDATE.log - metabase parsing log
- iis.tr.createDATE.log - items (sites, accounts, ...) creating log
- anon.usersDATE.NUMBER.log - anonymous user accounts
- err.cr.siteDATE.NUMBER.log - sites with errors
- ftp.usersDATE.NUMBER.log – FTP accounts

Note: The program appends new info to the metabase parsing and items creating logs. It does not create new logs if you use it several times.

Thank you for using our product!

Note: If you see any error message in the logs, first try to find out the reason yourself. If you decide to contact HostTools support team, please send us all the logs and metabase.xml file. Thank you.

We release new versions add new programs often. Please visit our website **www.HostsTools.com** for a full list of our freeware and shareware programs.

Appendix 1. IIS properties transferred by IIS Sites Transfer 2.0

Property	Description
AccessSSLFlags	Whether the SSL is set for the particular application.
AppIsolated	This property indicates whether an application is to run in a separate process.
AppPackageID	This property provides the MTS package ID for a transaction. This is used to manage transactions by Component Services.
AppPackageName	This property provides the MTS package name for a transaction.
AccessFlags	With the accessFlags setting in IIS 6.0 administrators can lock down the IIS execution permissions to prevent dynamic content from executing.
AspEnableParentPaths	This property specifies whether an ASP page can allow paths relative to the current directory (using the ..\

	notation).
AllowKeepAlive	This property specifies whether keep alive processing is allowed, which permits the application to execute the process continuously to remain in service.
AnonymousUserName	The Server assigns a user/password with every action, the above property defines the user to allow access as anonymous user.
AppFriendlyName	It specifies a common name for the web application.
AppAllowClientDebug	Whether the debugging is allowed on client side for ASP driven websites.
AppAllowDebugging	Whether the debugging is allowed on server side for ASP driven websites.
AspScriptTimeout	It allows the ASP scripts to be executed for a particular script timeout.
AuthFlags	The feature specify various authentication methods as Anonymous (for everyone), Basic (password is not encrypted) and Network Authentication.
ConnectionTimeout	The property defines in which the client has sent data to the server. The website service and FTP timeouts are defined under it.
DefaultDoc	The property defines the file which will be loaded as home page, while opening a website, on first priority basis.
DirBrowseFlags	Whether folder browsing and listing is allowed for a particular website.
DontLog	The property defines whether the request to server needs to be logged or exempt.
HttpCustomHeaders	Each file header attributes while accessing from server that are sent to client's end.

HttpErrors	The error page that is generally shown while website has errors, in the format of website address or particular file.
HttpRedirect	It specifies the folder or website, where the site is being redirected.
HttpExpires	The property defines whether the browser is displaying cached page or updated page from the server.
LogType	Allow the IIS server logging is enabled.
LogFileDirectory	It defines the location where the log file should be saved.
MimeMap	It defines the list of all the various file name extensions. This is to decide how the file will be downloaded from server of all extensions.
RedirectHeaders	Additional file header attributes in the form of strings, while redirecting to other addresses.
ScriptMaps	The property defines file name extensions for server mappings.
SecureBindings	The property allows Server to assign various ports to the web application for SSL and HTTP, FTP access etc.
ServerAutoStart	Whether to start the server automatically upon restarting.
ServerState	The ServerState property presents the current state of the server, whether the server is starting, started, stopping, stopped, pausing, paused or continuing.